

# TRU-SCAPES<sup>®</sup>

LANDSCAPE LIGHTING

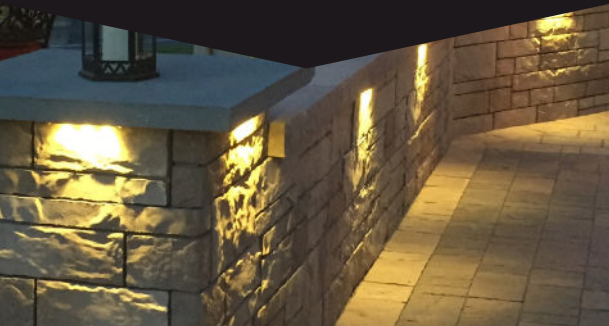


 LED LANDSCAPE LIGHTING



## Step and Wall Lighting for Hardscapes

Our LED low voltage hardscape step and wall lights are powder coated aluminum fixtures with a stainless steel bracket. These hardscape lights have the option of 1, 4 or 8 LED lights to highlight steps, walls and outdoor kitchens.



### ITEMS INCLUDED:

- Silicone Wire Nuts
- Lead Wire: 36"

### LIGHTING SPECIFICATIONS:

- Construction: Powder Coated Aluminum
- Bracket: Stainless Steel
- Finishes: Black, Bronze, and Gray
- Light Source: Integrated 50/50 SMD LED
- Color Temp (CCT): 2700K
- Voltage Range: 9V – 15V AC/DC
- Power Supply: 12V Low Voltage Transformer (Sold Separately)

# HARDSCAPE LIGHTS



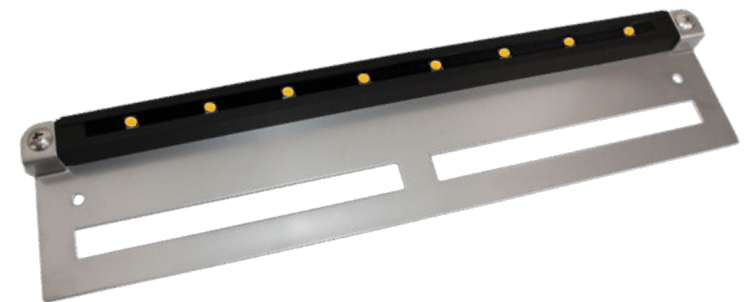
## TS-A1000

Dimensions: 7"(L) x 3"(W) x 5/8"(H)  
Light Count: 4  
Watts: 1.4W  
Lumens: 78



## TS-A500

Dimensions: 3.5"(L) x 3"(W) x 5/8"(H)  
Light Count: 1  
Watts: 0.2W  
Lumens: 24



## TS-A2000

Dimensions: 13"(L) x 3"(W) x 5/8"(H)  
Light Count: 8  
Watts: 2.5W  
Lumens: 130

**NEW!**

– AVAILABLE SUMMER 2019 –  
**PAVER LIGHTS**



**TS-HPL-6**

Dimensions: 6"(L) x 3/4"(W) x 2-3/8"(H)  
Watts: 1.5W  
Lumens: 35



**TS-HPL-8**

Dimensions: 8"(L) x 3/4"(W) x 2-3/8"(H)  
Watts: 1.8W  
Lumens: 45



**TS-HPL-9**

Dimensions: 9"(L) x 3/4"(W) x 2-3/8"(H)  
Watts: 2.5W  
Lumens: 60

Create an LED Border in  
Your Hardscape  
and Light-up the Way

Our low voltage LED paver lights are a powder coated aluminum housing with a frosted acrylic lens cover. The paver lights are available in 6", 8" & 9" lengths designed to fit along sailor and soldier course borders of patios, walkways, and driveways using standard 60mm or less paver products.

**ITEMS INCLUDED:**

- Silicone Wire Nuts
- Lead Wire: 36"

**LIGHTING SPECIFICATIONS:**

- Construction: Powder Coated Aluminum with Frosted Acrylic Lens
- Finish: Black
- Light Source: Integrated LED's
- Color Temp: (CCT) 2700K
- Voltage Range: 10V – 15V AC/DC
- Power Supply: 12V Low Voltage Transformer (Sold Separately)

## More for Your Hardscape

Get a gorgeous pillar light with a beautiful antique brushed bronze finish, which has a frosted heat resistant glass encasement for a decorative, modern look. Use it to add a warm, welcoming glow to your outdoor living area.

### ITEMS INCLUDED:

- Silicone Wire Nuts
- G4 LED Lamp
- Lead Wire: 36"
- Mounting Base
- Masonry Drill Bit and Template
- Anchor Kit

### LIGHTING SPECIFICATIONS:

- Construction: Powder Coated Aluminum & Frosted Tempered Glass
- Finish: Antique Brushed Bronze
- Light Source: G4 LED Lamp
- Watts: 3W
- Color Temp (CCT): 2700K
- Voltage Range: 9V – 15V AC/DC
- Power Supply: 12V Low Voltage Transformer (Sold Separately)
- Mounting Plate: 5.5" x 5.5"

# PILLAR LIGHTS



### TS-PL100

Dimensions: 9"(L) x 9"(W) x 20"(H)  
Watts: 3W  
Lumens: 300



### TS-PL101

Dimensions: 9"(L) x 9"(W) x 18"(H)  
Watts: 3W  
Lumens: 300







# ACCENT LIGHTS



## TS-B102

Light Beam: 40°  
Watts: 4W (MR16)  
Lumens: 250



## TS-B103

Light Beam: 40°  
Watts: 4W (MR16)  
Lumens: 250



**TS-B103TK**  
Tree Kit



## TS-B105

Light Beam: 60°  
Watts: 5.5W (MR16)  
Lumens: 450



## TS-B106

Light Beam: 120°  
Watts: 8W (PAR36)  
Lumens: 900

## Heavy-duty Accent Spotlights

Our professional grade LED low voltage landscape accent lights are constructed of heavy-duty die-cast brass with a durable finish. Accent lights are commonly used to highlight trees, shrubs, walls or other focal points in the landscape. The accent lights feature a threaded knob to adjust beam angle and heat resistant glass lens.

### ITEMS INCLUDED:

- Silicone Wire Nuts
- LED Lamps (as specified)
- Lead Wire: 36"
- Heavy-duty 8" Ground Stake

### LIGHTING SPECIFICATIONS:

- Construction: Solid Brass
- Finishes: Black or Bronze
- Light Source: MR16 LED Lamp
- Color Temp (CCT): 2700K
- Voltage Range: 9V – 15V AC/DC
- Power Supply: 12V Low Voltage Transformer (Sold Separately)

# WELL LIGHTS

## TS-B201

Light Source: PAR36 LED Lamp  
Light Beam: 120°  
Watts: 8W  
Size: 5.5"(Dia.) x 9.625"(H)  
Lumens: 900'



## TS-B203

Light Source: MR16 LED Lamp  
Light Beam: 40°  
Watts: 4W  
Size: 4"(Dia.) x 6.875"(H)  
Lumens: 250

## Showcase Your Property with In-ground Lighting

These low voltage landscape LED well lights are heavy-duty complete with heat resistant glass. Use to highlight focal point plants or trees or to light up a wall, statue or fountain.

B201 features a brass cap on top of a black PVC ground pipe. B203 features a brass shroud cover with a black composite in-ground housing.



### ITEMS INCLUDED:

- Silicone Wire Nuts
- LED Lamp
- Lead Wire: 36"

### LIGHTING SPECIFICATIONS:

- Construction: Brass & PVC
- Finish: Black or Bronze
- Color Temp (CCT): 2700K
- Voltage Range: 9V – 15V AC/DC
- Power Supply/Voltage: 12V Low Voltage Transformer (Sold Separately)

# PATH LIGHTS



## TS-B301

Overall Height: 22-1/4"  
Lumens: 300



## TS-B302

Overall Height: 23-1/4"  
Lumens: 300



## TS-B304

Overall Height: 24"  
Lumens: 300



## TS-B306

Overall Height: 21-1/4"  
Lumens: 300

## Elegant & Stylish Path Lights

Our professional grade LED low voltage landscape path lights are a solid heavy-duty brass fixture used to highlight walkways, pathways and themed areas. Our path lights feature a stylish designed head with a 360 degree LED lamp for optimum light output and include a heavy-duty ground stake.

### ITEMS INCLUDED:

- Silicone Wire Nuts
- G4 LED Lamp
- Lead Wire: 36"
- Heavy-duty 8" Ground Stake

### LIGHTING SPECIFICATIONS:

- Construction: Solid Brass
- Finishes: Black or Bronze
- Light Source: G4 LED Lamp
- Light Beam: 360°
- Watts: 3W

- Color Temp (CCT): 2700K
- Voltage Range: 9V – 15V AC/DC
- Power Supply: 12V Low Voltage Transformer (Sold Separately)







## Smart Landscape Lighting Control

Smart Bluetooth wireless landscape lighting transformer with a dashboard to check status and manually control the lights. Power meter feature displays the watts used, available, and percent of full capacity. Multiple low-voltage 14V AC output terminals for use with LED lighting. Astronomical and time-of-day based programs.

### SPECIFICATIONS:

- Dimensions: 5.3"(W) x 10.9"(H) x 5.3"(D)
- Efficiency Certified: DOE & CEC
- UL/cUL 1838 listed and FCC Part 15 Class B
- Exterior: Anodized Aluminum
- IP Rating: IP 21
- Input Voltage Rating: 120V AC
- Output Voltage Rating: 14V AC

### 150 WATT MODEL:

- Max Output Current: 12.5 A
- Output Terminals: 2

### 300 WATT MODEL:

- Max Output Current: 20.5 A
- Output Terminals: 3

# SMART WIRELESS CONTROL



## TS-TAAB-150

Max Output Power: 150 W

## TS-TAAB-300

Max Output Power: 300 W





# ACCESSORIES & LAMPS



**TS-TSST-75**

## 75W SS Transformer

Input: 120VAC, 50/60Hz  
 Output Voltage: 9V – 15V AC  
 Includes Built-in Mechanical Timer  
 Dimensions: 4.3"(W) x 6.7"(H) x 4.3"(D)



**12/2: TS-122G250**  
**14/2: TS-142G250**

## Wire

Black direct burial polyvinyl chloride (PVC) coated copper low voltage wire. Available in 12/2 or 14/2 in 250 ft. length.



**9": TS-TPHOTO9**  
**15': TS-TPHOTO**

## Photocell

Stem and swivel mount plug-in photocell with 9 in. or 15 ft. lead wire. Compatible with all Tru-Scapes Stainless Steel Transformers.



**TS-WNUT50**

## Wire Nuts

All fixtures come with 2 silicone filled wire nuts. Also available in packs of 50.



**Black: TS-STAKE-BLK**  
**Bronze: TS-STAKE-BRZ**

## Heavy-duty Ground Stake

Size: 8"  
 Available in Black or Bronze.



**TS-360G4-1**

## G4 Lamp

Power: 3W LED  
 CCT: 2700K  
 Beam: 360°  
 Lumens: 300



**4W: TS-40MR16**  
**5.5W: TS-60MR16**

## MR16 Lamps

Power: 4W OR 5.5W LED  
 CCT: 2700K  
 Beam: 4W - 40° – Lumens: 250  
 Beam: 5.5W - 60° – Lumens: 450



**TS-120PAR36**

## PAR36 Lamp

Power: 8W LED  
 CCT: 2700K  
 Beam: 120°  
 Lumens: 900

## LIMITED WARRANTIES

Tru-Scapes® Landscape Lighting warrants that its products will be free from defects in workmanship and materials for (1) year. The exceptions are:

- Light fixtures of brass, copper or stainless steel, including finishes are warranted for five (5) years to the original purchaser.
- We recommend only using Tru-Scapes Transformers with our fixtures, due to complications with inferior products that are on the market. (We reserve the right to deny warranty claims when using an alternative power unit.)
- LED Bulbs are warranted for five (5) years or 30,000 hours, whichever comes first to the original purchaser.
- Stainless Steel, Painted and Weatherproof (plastic housing) transformers, excluding timers and photo cells, are warranted for five (5) years to the original purchaser.
- Light sockets and fixture housing on all fixtures are warranted or life to the original purchaser.
- Exterior black powder coat finishes are warranted for 5 years for chipping and flaking to the original purchaser.
- Natural patina on brass is natural and normally occurring and not covered under any warranty.
- Tru-Scapes® warranties do not cover plants that die or burn because of continuous light shined on them. This is not a defect, but the inherent nature of such plants. Certain acid-loving plants such as arborvitae, pine trees, and others must not be exposed to light of any kind for more than 18 hours a day as these plants need time to sleep and allow photosynthesis to naturally occur.

Contact your dealer for more information.



Tru-Scapes Landscape Lighting  
Located in Southeastern PA

[contacts@tru-scapes.com](mailto:contacts@tru-scapes.com)  
[www.tru-scapes.com](http://www.tru-scapes.com)

